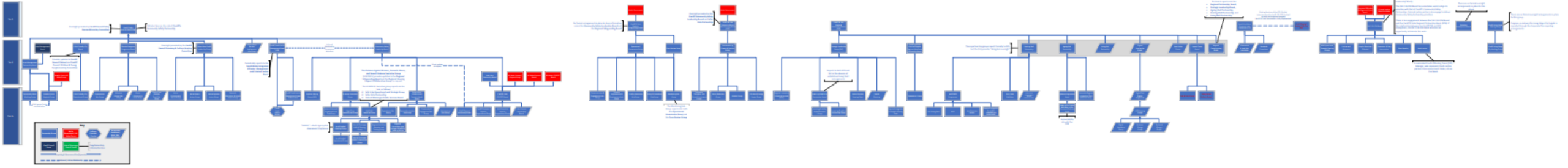
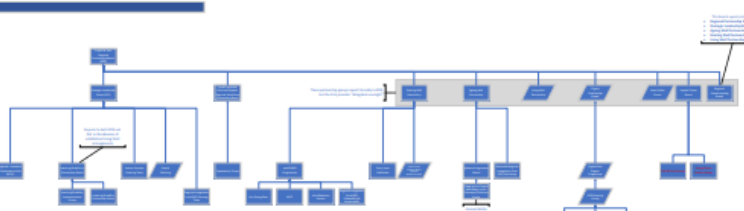
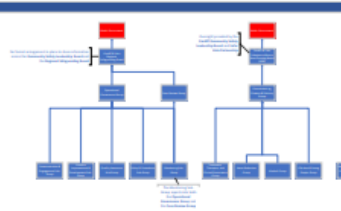
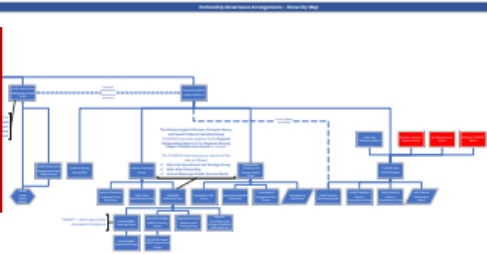
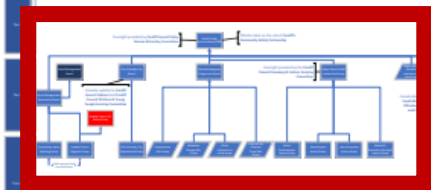


Governance Mapping Exercise: Update

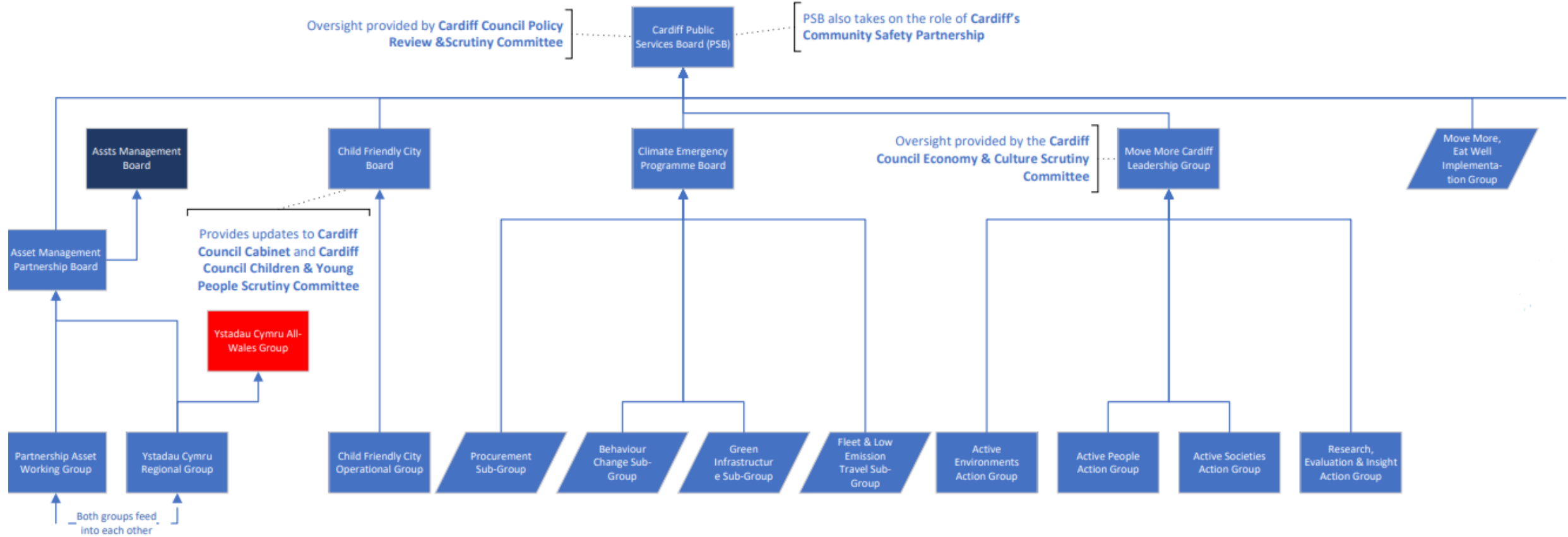
Governance Mapping Exercise

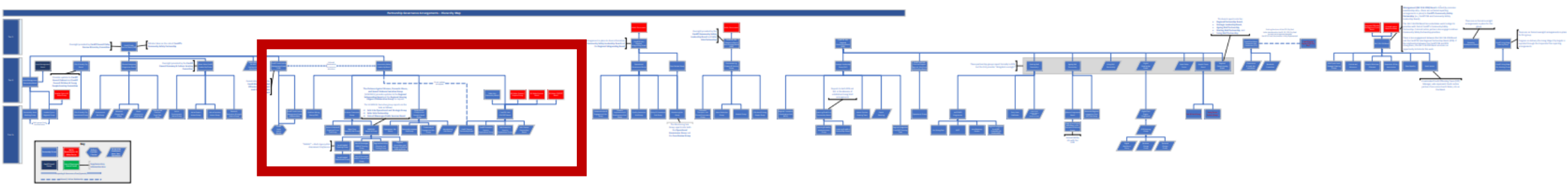
- A governance mapping exercise is underway in order to understand ‘as is’ partnership arrangements, responsibilities and accountabilities across the Cardiff and Vale region.
- In order to understand ‘as is’ arrangements, identified partnership leads have been asked to provide the following information:
 - The legislation requiring the partnership’s establishment (if any)/ its purpose
 - Statutory requirements (if any)/ key responsibilities
 - The partnership’s sub-groups – who reports into the partnership?
 - Who does the partnership report to? Are oversight arrangements in place?
 - Membership
 - Existing priorities



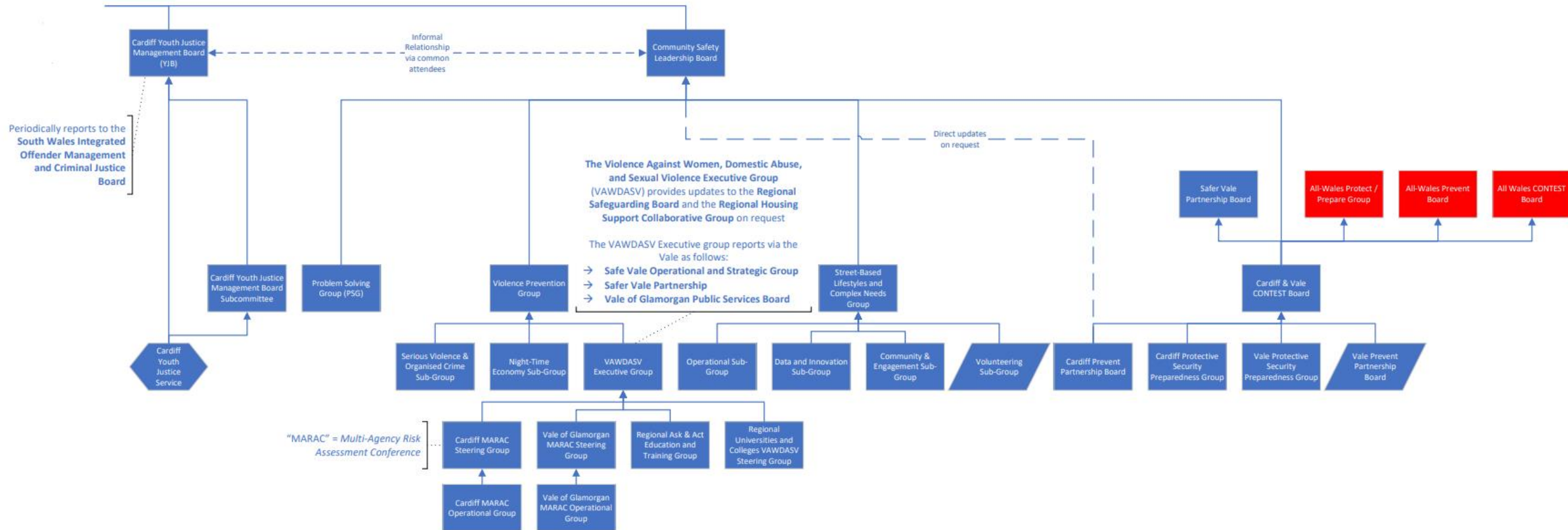


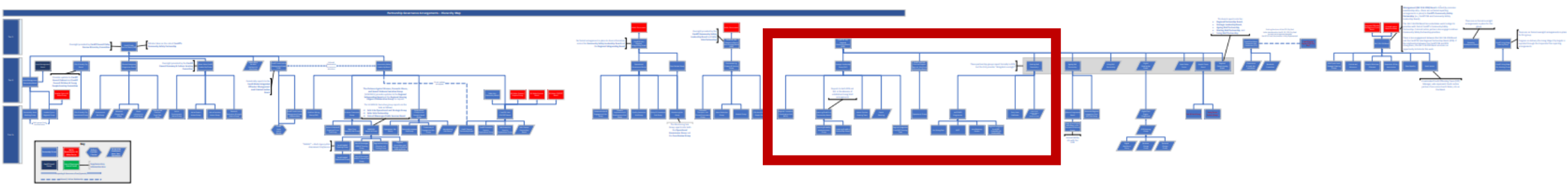
Cardiff PSB



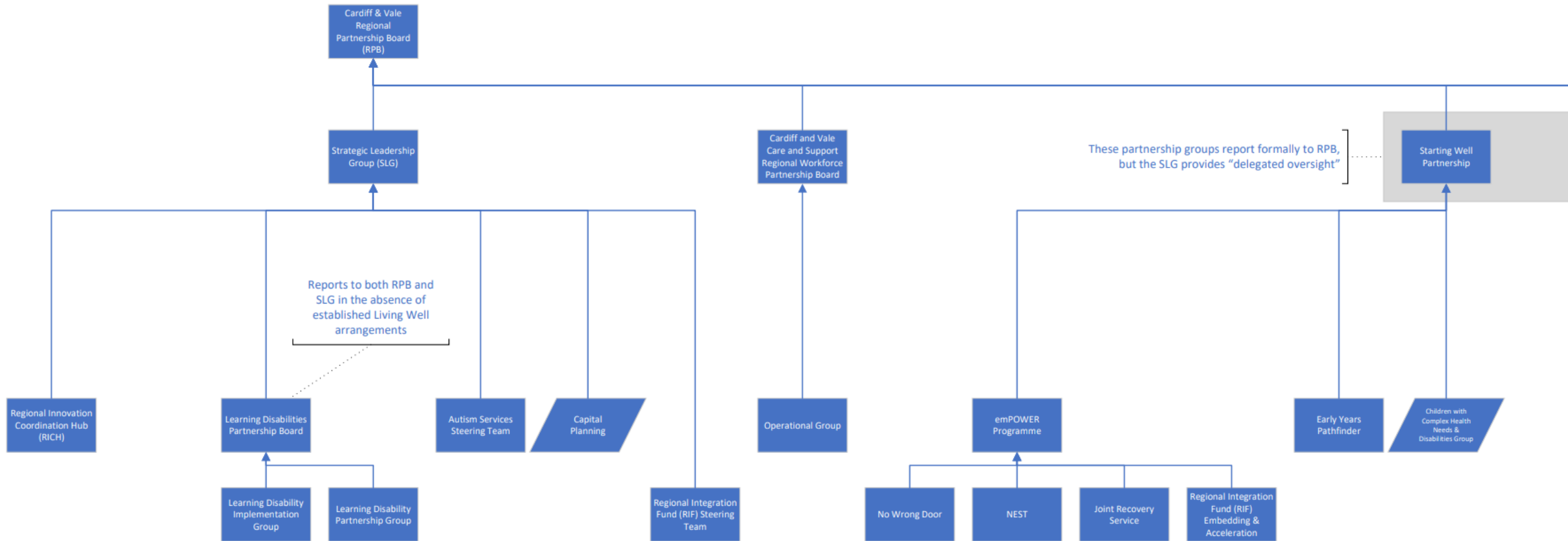


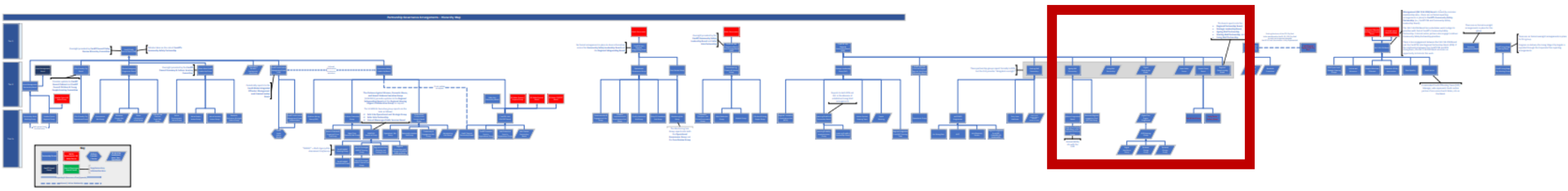
Cardiff PSB (contd.)





Cardiff & Vale RPB





Cardiff & Vale RPB (contd.)

- This board reports into the:
- Regional Partnership Board,
 - Strategic Leadership Board,
 - Ageing Well Partnership,
 - Starting Well Partnership, and
 - Living Well Partnership

